

## Clampable Vacuum Generator – Gimatic

- Two size options available.
- Can be integrated near the gripping point, lightweight.
- No reduction of vacuum flow rate.
- Flexible, the clampable design enables the use of in-line or elbow fittings.
- Two vacuum port options G1/8" & G1/4".



Quick#	Part#	Gimatic Part#	Price	Max Vacuum Level*	Max Suction Flow*		Air Consumption*		Std. Supply Pressure		Wt
					CFM	l/min	CFM	l/min	psi	Bar	
V7687	GOC-3330084	S-LP-2-G1/8	\$23.50	82%	0.53 CFM	15.0 l/min	0.36 CFM	10.2 l/min	31.91 psi	2.2 Bar	17g
V7688	GOC-3330085	S-HF-2-G1/8	\$23.50	78%	0.61 CFM	17.3 l/min	0.32 CFM	9.1 l/min	87.02 psi	6 Bar	17g
V7689	GOC-3330086	S-HV-2-G1/8	\$23.50	92%	0.47 CFM	13.3 l/min	0.28 CFM	7.9 l/min	72.52 psi	5 Bar	17g
V7690	GOC-3330087	M-LP-2-G1/4	\$29.50	89%	1.42 CFM	40.2 l/min	1.17 CFM	33.1 l/min	58.02 psi	4 Bar	27g
V7691	GOC-3330088	M-HF-2-G1/4	\$29.50	73%	1.65 CFM	46.7 l/min	0.91 CFM	25.7 l/min	87.02 psi	6 Bar	27g
V7692	GOC-3330089	M-HV-2-G1/4	\$29.50	94%	1.61 CFM	45.6 l/min	1.00 CFM	28.3 l/min	72.52 psi	5 Bar	27g

\*Values listed are achieved when supplied the listed standard supply pressure. Maximum operating pressure is 7 Bar / 101.5 psi.

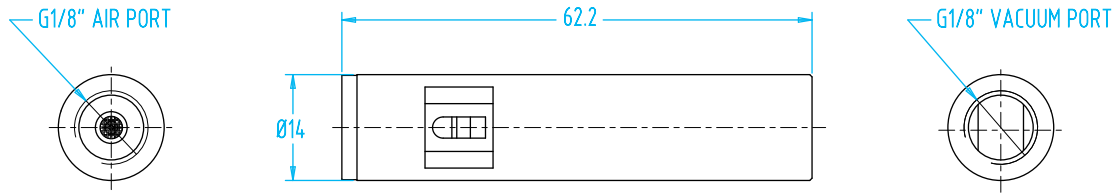




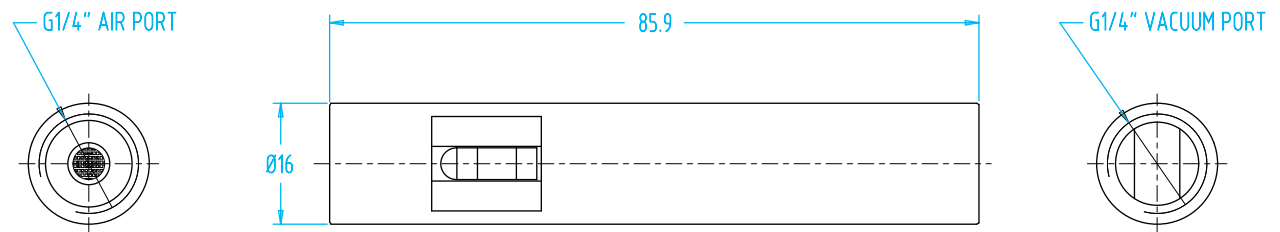
## Clampable Vacuum Generator – Gimatic

(Dimensioned drawings shown full scale)

### Q# V7687–V7689



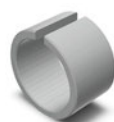
### Q# V7690–V7692



- CU
- QC
- VG
- VC
- VA
- SG
- GR
- MT
- AC
- CS
- CC

Quick#	Part#	Compressed Air Input	Vacuum Level	Suction Flow Rate	General Usage Notes & Typical Applications
V7687	GOC-3330084	Low Feed Pressure, Low Consumption	High	Medium	<ul style="list-style-type: none"> <li>• Cost effective in use because of their high efficiency design (due to only requiring low feed pressure).</li> <li>• High vacuum holding force optimal for picking small to medium parts.</li> <li>• Applications where leakage is minimal, such as picking smooth mostly flat parts.</li> </ul>
V7690	GOC-3330085				
V7688	GOC-3330086	High Feed Pressure, High Consumption	Low	High	<ul style="list-style-type: none"> <li>• Applications where a low cycle time is required.</li> <li>• Recommended for pick/place of smaller lightweight parts.</li> <li>• When there is leakage, incomplete vacuum seal, uneven surfaces, texture, porous parts, cardboard, textile/fabric, and when sealing over raised/sunken logos or text.</li> <li>• Often used in combination with polyurethane or foam lip vacuum cups.</li> <li>• When large volumes of air needs to be evacuated, like when using large or multi-bellow vacuum cups.</li> </ul>
V7691	GOC-3330087				
V7689	GOC-3330088	Medium Feed Pressure, Medium Consumption	High	Low	<ul style="list-style-type: none"> <li>• Applications that require higher vacuum levels (i.e. larger holding forces), ideal for picking larger/heavier parts.</li> <li>• To improve cycle time it is recommended to use vacuum cups with low internal air volume (i.e. smaller diameter cups and ideally flat or 1.5 bellow vacuum cups).</li> <li>• Applications where holding force more important than cycle time (i.e. higher vacuum level).</li> </ul>
V7692	GOC-3330089				

Use Quick#s for easy online ordering.



#### Mounting Adaptor

Quick#	Part#	Price	Wt
7706	MFM-A106	\$10.14	5g

- Use this Ø20mm mounting adaptor with Ø16mm vacuum generators.

