

MMS 22

Electronic magnetic switch

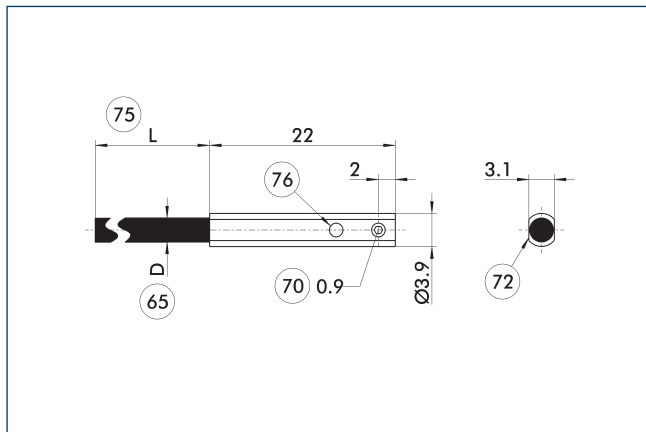


Technical data

Description		MMS 22-S-M8-PNP	MMS 22-S-M8-NPN	MMSK 22-S-PNP	MMSK 22-S-NPN
ID		0301032	0301033	0301034	0301035
Principle of function					
Measuring principle		magnetic	magnetic	magnetic	magnetic
Switching function		Closer	Closer	Closer	Closer
Type of switching		PNP	NPN	PNP	NPN
Number of switching points		1	1	1	1
Teach function		no	no	no	no
General data					
Min./max. ambient temperature	[°C]	-20/80	-20/80	-20/80	-20/80
LED display in sensor		yes	yes	yes	yes
Electrical operating data					
Type of voltage		DC	DC	DC	DC
Nominal voltage	[V]	24	24	24	24
Min./max. operating voltage	[V]	10/30	10/30	10/30	10/30
Voltage drop	[V]	2	2	2	2
Max. switching current	[A]	0.05	0.05	0.05	0.05
Short circuit protection		yes	yes	yes	yes
Protected against polarity reversal		yes	yes	yes	yes
Mechanical operating data					
Housing material		PA	PA	PA	PA
Cable connector/cable end		M8 connector, 3-pin	M8 connector, 3-pin	open wire strands	open wire strands
Cable length L	[cm]	30	30	200	200
Cable diameter D	[mm]	2.2	2.2	2.2	2.2
Cable design (wire cross section / number of wires)		3x 0,05mm ²	3x 0,05mm ²	3x 0,05mm ²	3x 0,05mm ²
Cable sheath material		PUR	PUR	PUR	PUR
Min. bending radius (dynamic)	[mm]	22	22	22	22
Min. bending radius (static)	[mm]	11	11	11	11
Weight	[kg]	0.01	0.01	0.02	0.02
Protection class IP (sensor, plugged)		67	67	67	67
Protection class		III	III	III	III
Drilling emulsion resistance *		yes	yes	yes	yes
Options and their characteristics					
Version with lateral cable outlet		MMS 22-S-M8-PNP-SA	MMS 22-S-M8-NPN-SA	MMSK 22-S-PNP-SA	MMSK 22-S-NPN-SA
ID		0301042	0301043	0301044	0301045
LED display in sensor		yes	yes	yes	yes

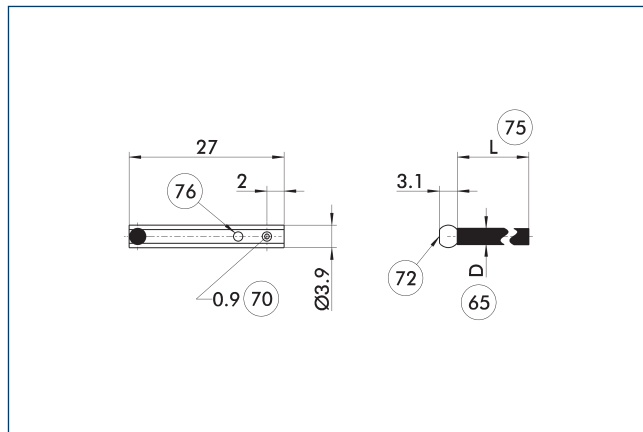
* Tested cutting emulsions: r.rhenus TU 43P, Motorex Swisscool Magnum UX 550 and Oemeta 760 (1008339).

MMS 22 main view



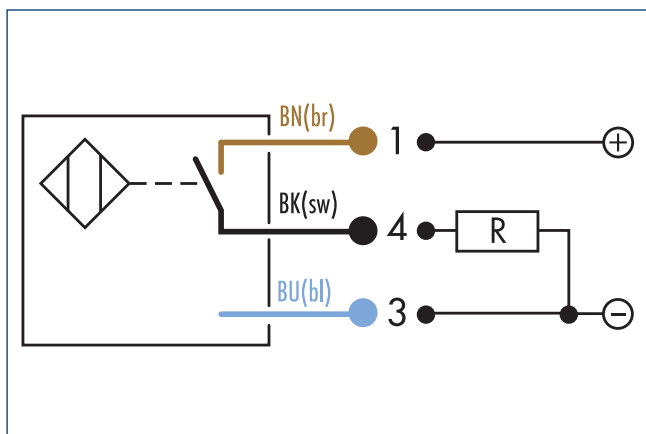
- 65 Cable diameter
- 70 Wrench size
- 72 Active sensor surface
- 75 Cable length
- 76 LED

MMS 22-SA main view

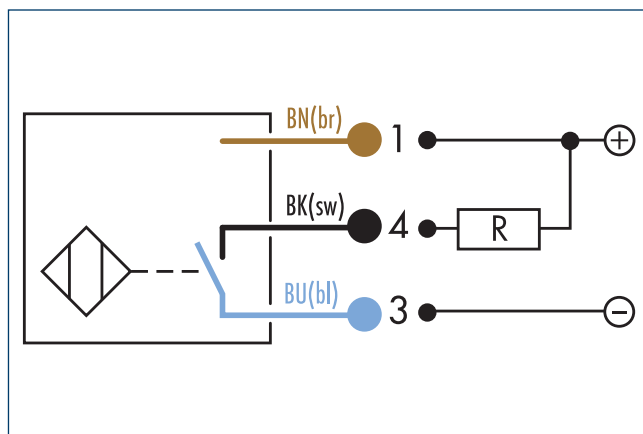


- 65 Cable diameter
- 70 Wrench size
- 72 Active sensor surface
- 75 Cable length
- 76 LED

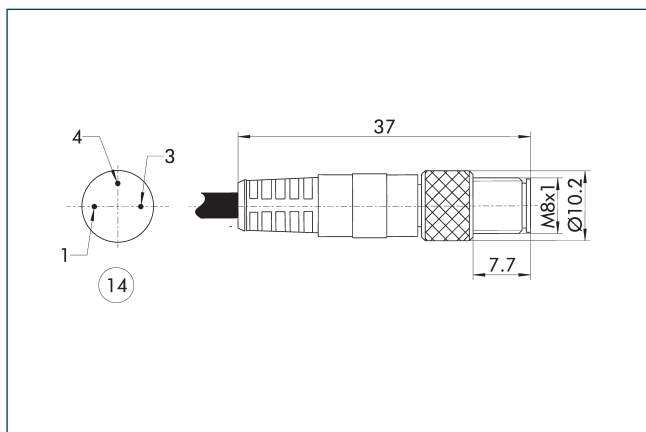
Wiring diagram closer PNP



Circuit diagram of NPN closer



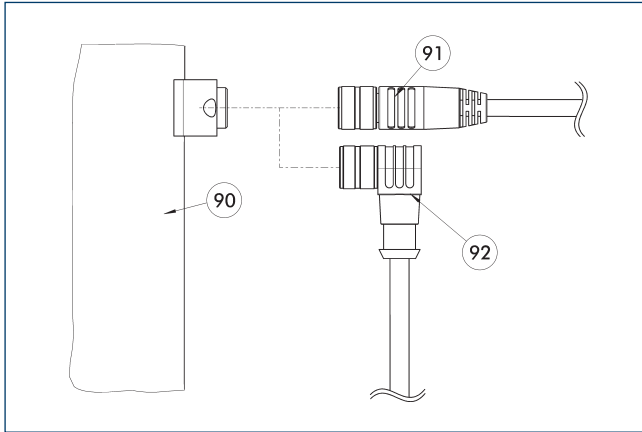
View of M8 connector (3-pin)



- 14 Connector

This view shows the plug connector on the cable end of the sensor.

Connection cables

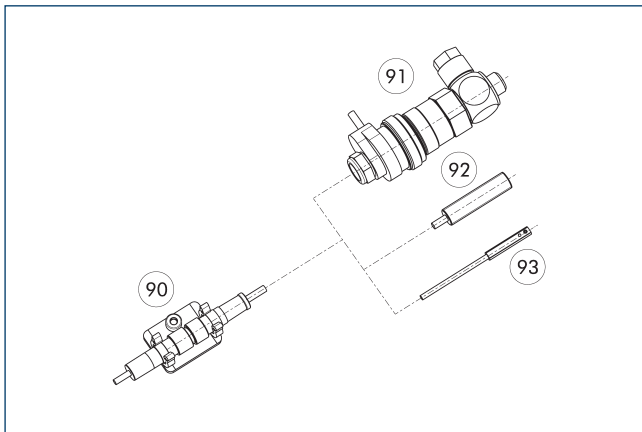


- ⑨⑩ Electrical connection component
- ⑨① Cable with straight connector
- ⑨② Cable with angled connector

Description	ID	Length	Often combined
		[m]	
Connection cables			
KA BG08-L 3P-0300-PNP	0301622	3	●
KA BG08-L 3P-0500-PNP	0301623	5	
KA BW08-L 3P-0300-PNP	0301594	3	
KA BW08-L 3P-0500-PNP	0301502	5	
Cable extension			
KV BW08-SG08 3P-0030-PNP	0301495	0.3	
KV BW08-SG08 3P-0100-PNP	0301496	1	
KV BW08-SG08 3P-0200-PNP	0301497	2	●

① BG stands for a connection cable with a straight female connector and BW for an angled female connector. SG stands for a connection cable with a straight male connector and SW for an angled male connector.

clip for plug/socket



- ⑨⑩ CLI plug bracket
- ⑨① MV micro valve
- ⑨② IN proximity switch
- ⑨③ Magnetic switch MMS

The CLI clip is used for fastening and strain relief for the plug connectors. For example for the sensor and cable extension connection.

Description	ID	
clip for plug/socket		
CLI-M8	0301463	