

Custom Drawer Magnet Order Form

Submit one form for each drawer magnet.

Standard Top and Bottom Flange Dimensions:

DM-4: 5" x 5"

DM-6: 7" x 7"

DM-8: 9" x 9"

(These can be customized)

Specify Thread Size:

Thread Spec:

No Holes Required

Material Hopper Throat Diameter:

Inside Diameter:

DM4: Max=2" / Min=7/8"

DM6: Max=4 1/2" / Min=1 7/8"

DM8: Max=6" / Min=4"

Specify Hole Diameter:

I will Specify:

EMI can Specify:

No Holes Required

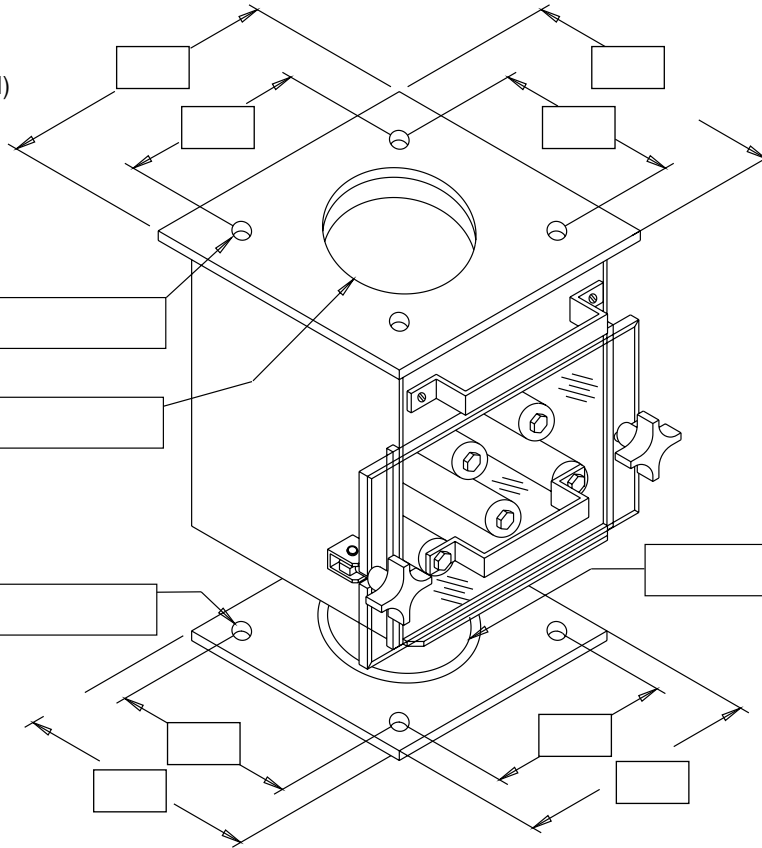
Machine Feed Throat Diameter:

Inside Diameter:

DM4: Max=2" / Min=7/8"

DM6: Max=3 7/8" / Min=1 7/8"

DM8: Max=6" / Min=4"



Note: Top and bottom flanges can be different sizes and have different drill holes. Thickness = 1/4"

Note: If bolt pattern matches housing dimensions, male threaded studs are required.

Options:

Purge Hopper (Specify Location)

Tapped, Liquid Dispensing Unit
(Specify Tap Size: _____)

Discharge Dump Tube (Specify Location: _____)

Without Gate

Construction:

Stainless Steel

Painted Steel

Drawer Magnet Model: _____

Company: _____

Machine Make: _____

Name: _____

Oz. Size / Tonnage: _____

Email: _____

Machine #: _____

Telephone: _____

Email completed form to: Sales@EMICorp.com